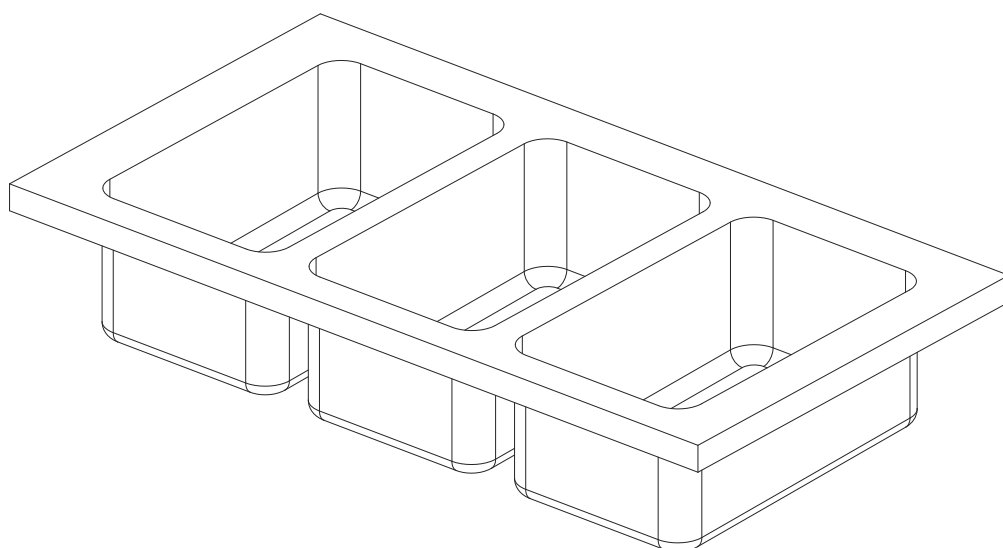
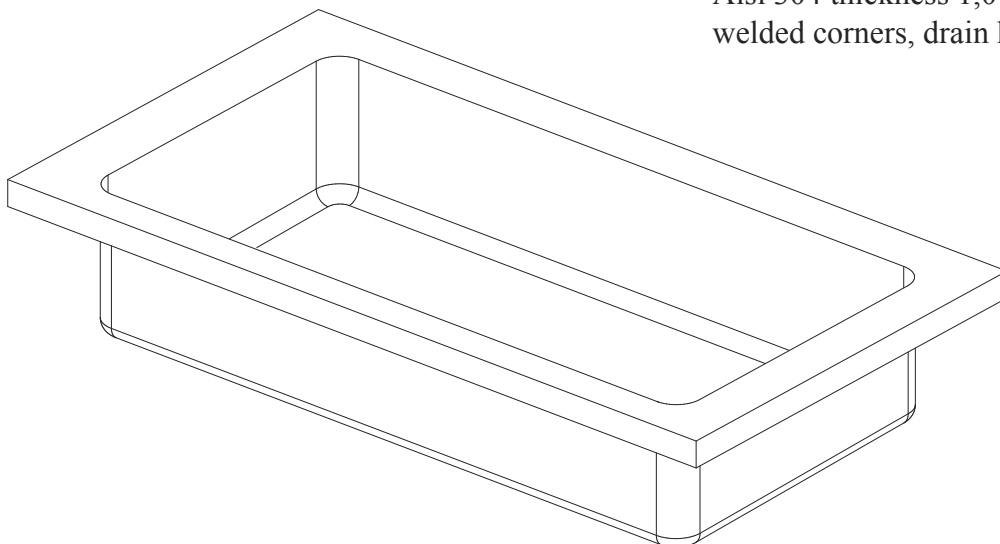



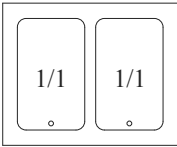
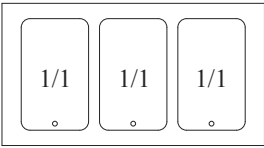
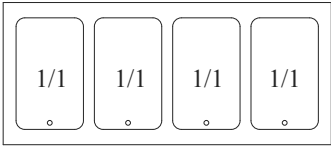
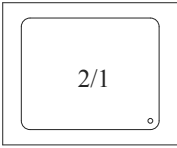



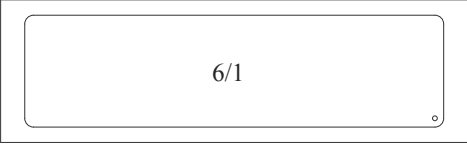
**PIANI CON VASCHE BAGNO-MARIA
BAIN-MARIE TOPS**

Standard:

Aisi 304 spessore 1,0 mm, 4 lati piegati,
angoli saldati, foro di scarico 1/2"

Aisi 304 thickness 1,0 mm, 4 bent sides,
welded corners, drain hole 1/2"

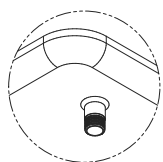
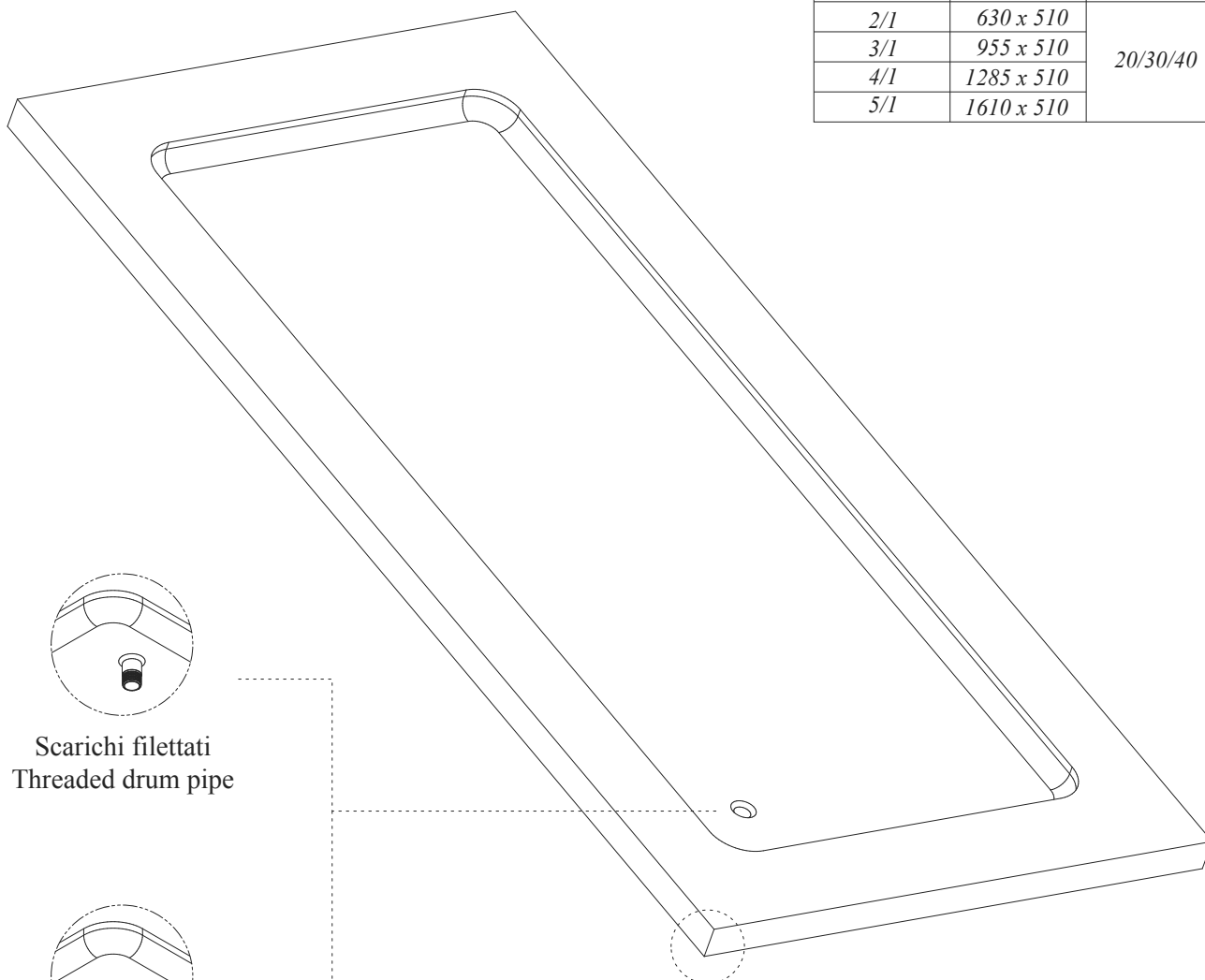


	CODICE / CODE	DIMENSIONE TOP TOP DIMENSIONS	DIMENSIONI VASCA BOWL DIMENSIONS
	PBM04651	400 x 650 mm	510 x 308 x 215H
	PBM08652	800 x 650 mm	510 x 308 x 215H
	PBM12653	1200 x 650 mm	510 x 308 x 215H
	PBM15654	1500 x 650 mm	510 x 308 x 215H
	PBM08651	800 x 650 mm	630 x 510 x 215H
	PBM12651	1200 x 650 mm	955 x 510 x 215H
	PBM15651	1500 x 650 mm	1280 x 510 x 215H
	PBM18651	1800 x 650 mm	1605x 510 x 215H
	PBM21651	2100 x 650 mm	1930x 510 x 215H

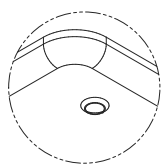
**PIANI STAMPATI
PRESSED TOP**

MODELLI / MODEL

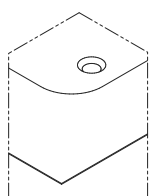
GN	TYPE	H
2/1	630 x 510	20/30/40
3/1	955 x 510	
4/1	1285 x 510	
5/1	1610 x 510	



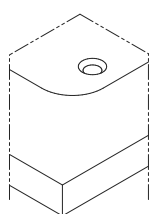
Scarichi filettati
Threaded drum pipe



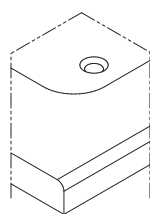
Foro di servizio del piano
Tup hole



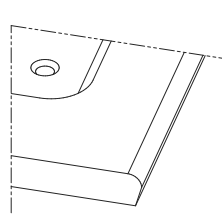
Taglio Laser
Laser cut



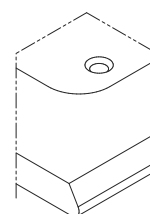
Profilo quadro
Square outline



Profilo smussato
tondo
Round outline



Profilo tondo
rientrante
Shaped front



Profilo smussato
diagonale
Shaped front